



Setting Up Your Computer

CAUTION:

Before you set up and operate your Dell® computer, see the safety instructions in your *Product Information Guide*.

1 | Connect the monitor using EITHER the white DVI cable OR the blue VGA cable (DO NOT connect both cables)

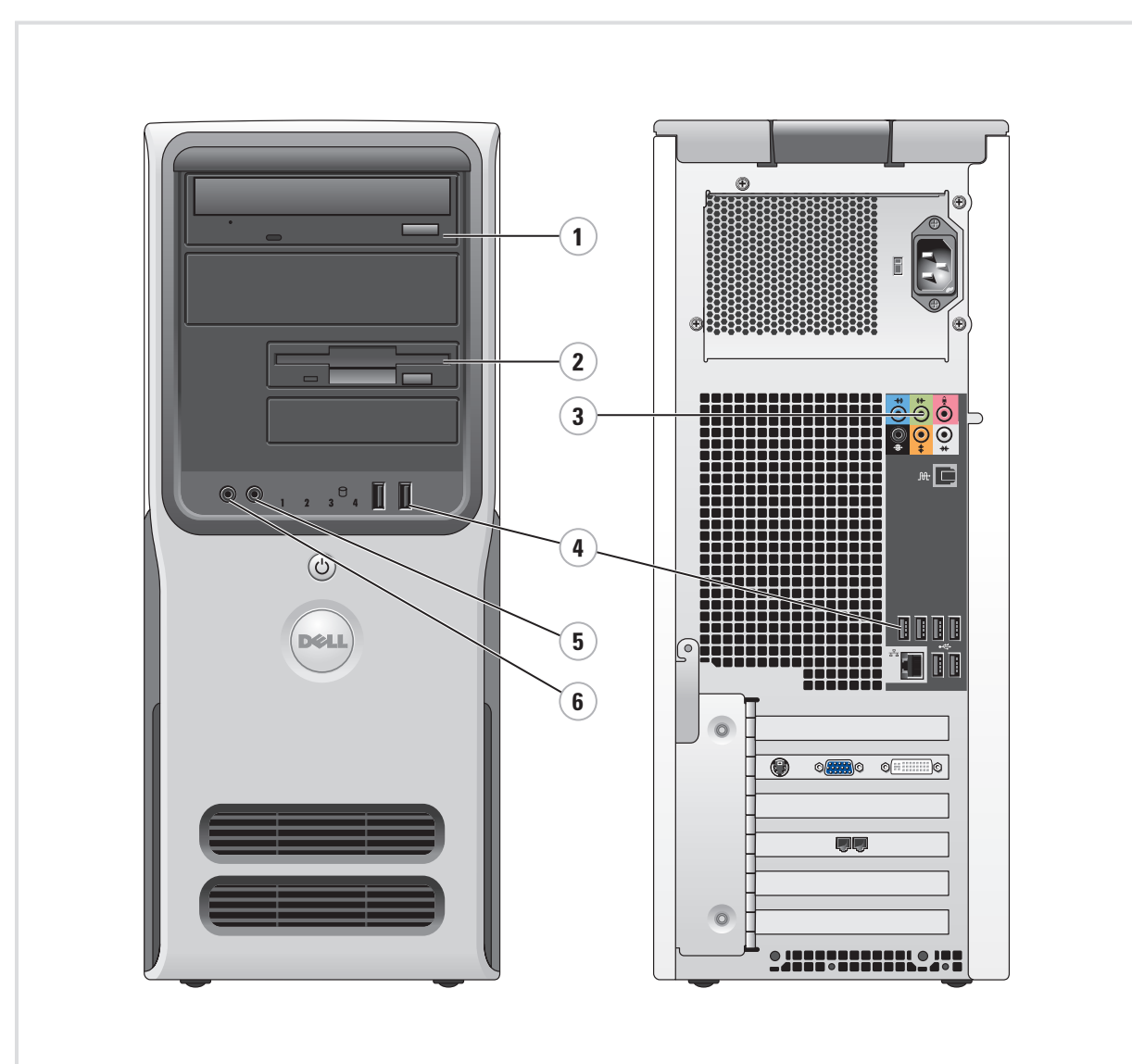
2 | Connect Keyboard and Mouse

3 | Connect Network (cable not included)

4 | Connect Modem (telephone cable not included)

5 | Connect Power Cables

6 | Push Power Buttons

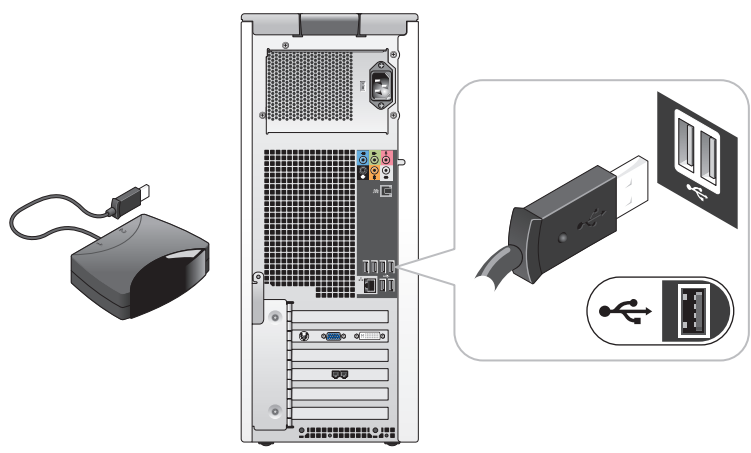


System Features

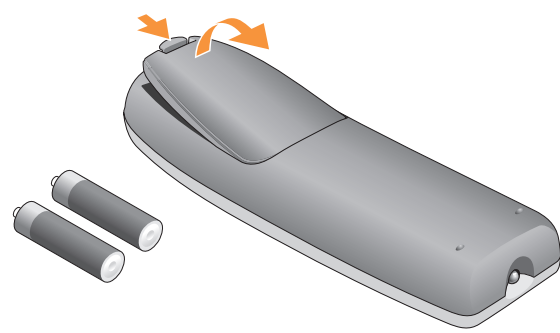
1. CD or DVD drive
2. floppy drive (optional) or Media Card Reader (optional)
3. speaker connectors
4. USB 2.0 connectors
5. headphone connector
6. microphone connector



What's Next?



7 | Connect the sensor for the optional remote control



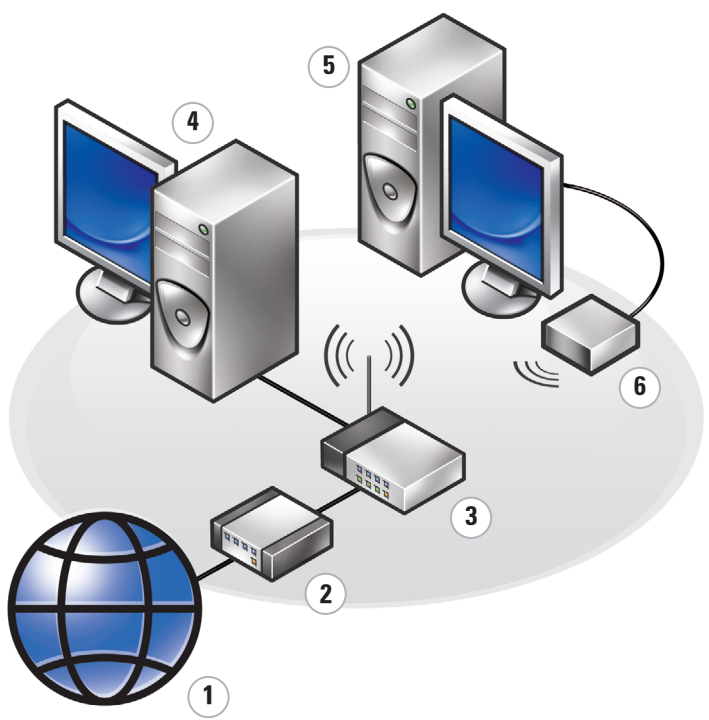
8 | Install the batteries into the optional remote control



9 | Launch the optional Media Center operating system



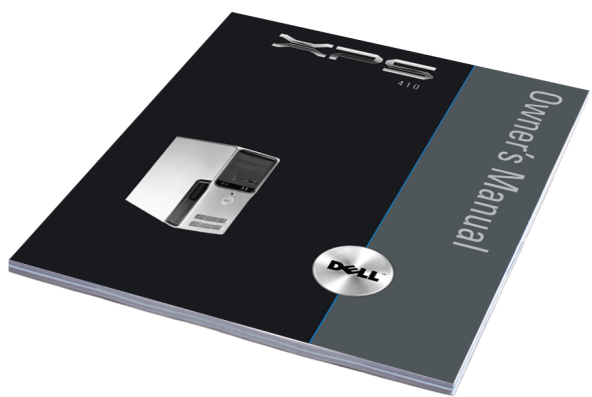
10 | See Media Center setup for optional TV tuner card



Wireless Network (Optional)

1. Internet service
2. Cable or DSL modem
3. Wireless router
4. Desktop computer with built-in wired network adapter
5. Desktop computer with USB wireless adapter
6. USB wireless adapter

See your computer or router's documentation for more information on how to set up and use your wireless network.



Finding Answers

For additional information about:

- Setup instructions, see your *Owner's Manual*.
- Your computer, click **Start**, then click **Help and Support**.
- Windows operating system, click **Microsoft Windows XP Tips**.

Support and educational tools are available at support.dell.com.

Information in this document is subject to change without notice.
 © 2006 Dell Inc. All rights reserved.
 Reproduction in any manner whatsoever without the written permission of Dell Inc. is strictly forbidden.
 Dell, the DELL logo, and XPS are trademarks of Dell Inc.; Microsoft and Windows are registered trademarks of Microsoft Corporation.
 Dell disclaims proprietary interest in the marks and names of others.
 June 2006



0TH659A00



Printed in the U.S.A.

www.dell.com | support.dell.com

